



# Powermaster T100 Hybrid Inverter



Support UPS function and black start



Scalable system configuration, extend to 300kW



110% continuous AC overloading capacity



Support remote control of DG.



Multiple MPPTs input



Multiple MPPTs input

Model	PowermasterPro 50K	PowermasterPro 63K	PowermasterPro 75K	PowermasterPro 100K
<b>Input (PV)</b>				
Max. Recommended PV Power(For Module STC)	109.2kW	124.8kW	156kW	156kW
Start Voltage	195V			
Nominal Voltage	550V			
Max. Input Voltage	1100V			
MPP Voltage Range	180V-800V			
Max. Input Current Per MPP Tracker	32A			
Max. Short-circuit Current Per MPP Tracker	40A			
No. of PV Strings Per MPP Tracker	2			
No. of MPP Trackers	7	8	10	10
<b>Output (AC)</b>				
AC Nominal Power	50kW	63kW	75kW	100kW
Max. AC Apparent Power	55KVA	69.3KVA	82.5KVA	110KVA
Nominal AC Voltage	380/400/415V			
AC Voltage Range	-15%~+10%			
AC Grid Frequency	50/60 Hz			
AC Grid Frequency/Range	45-55Hz/55-65Hz			
Max. Output Current	83.3A@380V 79.7A@400V	105A@380V 100.4A@400V	125A@380V 119.6A@400V	166.7@380V 159.4A@400V
Adjustable Power Factor	-1...+1			
THDi	<3%			
AC Grid Connection Type	3P3W+PE/3P4W+PE			
<b>Battery (DC)</b>				
Continuous Charging And Discharging Power	56.7KW	71.4KW	85.1KW	113.5KW
Battery Voltage Range	600-1000V (for 3P3W) / 680-1000V (for 3P4W)			
Recommended Battery Voltage	768V			
Max Charging And Discharging Current	83.3A	105A	125A	167A
BMS Communication	RS485/CAN			
<b>Efficiency</b>				
Max. Efficiency	98.20%			
<b>Certification</b>				
Grid	G99:2020, VDE 4105, VDE 0124, NRS 097-2-1, EN50549-1			
Safety	EN 62920-2017, IEC/EN62477-1, IEC/EN62109-1, IEC/EN62109-2, IEC62116, IEC61727			

### Backup Power (AC) \*

Rated AC Output Power	50KW	63KW	75KW	100KW
Max. AC Apparent Power	60KVA	75.6KVA	90KVA	120KVA
Rated AC Output Voltage	220V/230V/240V(L-N)			
Nominal AC Output Frequency	380V/400V/415V(L-L)			
Load Connection	50/60 Hz			
Max. Output Current	90.9A	114.5A	136.4A	181.8A
THDv	<3% (Linear Load)			
Load Unbalance	100% Three-Phase Unbalanced			
Overload Capacity	≤110% : Continues;110%~120% : <1min;>120% : 200ms			
On/Off Grid Transfer Time	20ms			

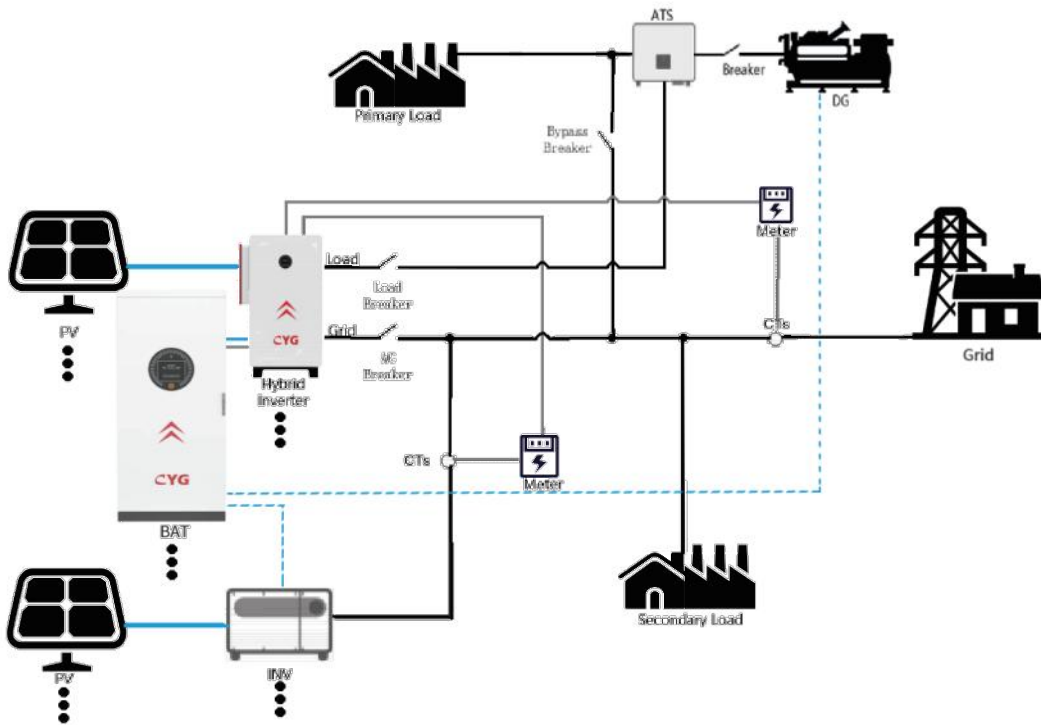
### Protection Devices

PV Reverse Polarity Protection	Yes
Battery Reverse Protection	Yes
AC/DC Surge Protection	Type II
Insulation Resistance Monitoring	Yes
Ground Fault Monitoring	Yes
Grid Monitoring	Yes
Residual-current Monitoring Unit	Yes
AC Short-circuit Protection	Yes
Strings Monitoring	Yes
Anti-islanding Protection	Yes
PID Protection	Yes
AFCI Function	Opt

### General

Dimensions (W / H / D)	820/1350/510mm			
Weight	153kg	153kg	160kg	160kg
Operating Temperature Range	-30 °C~60 °C (> 50 °C, Derating)			
Relative Humidity	0~100%			
Altitude	4000m			
Topology	Transformerless			
Cooling	Smart Air Cooling			
IP Degree	IP66			
Display	OLED+LED/APP			
Interfaces: RS485/CAN/USB	Yes			
Interfaces: WIFI/4G/LAN-X	Opt			
Warranty (5/10 years)	Yes/Opt			

Hybrid ESS for On-grid Solution Multiple system ( with DG)



Hybrid ESS for Off-grid Solution Multiple system ( with DG)

