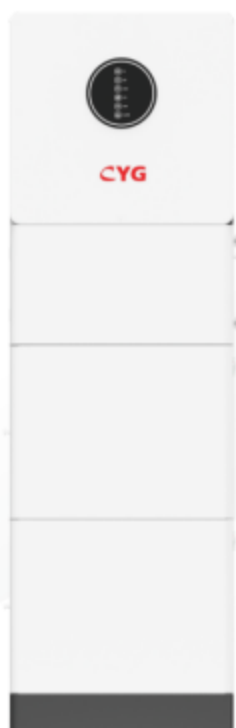


Single phase inverter

Operation instructions

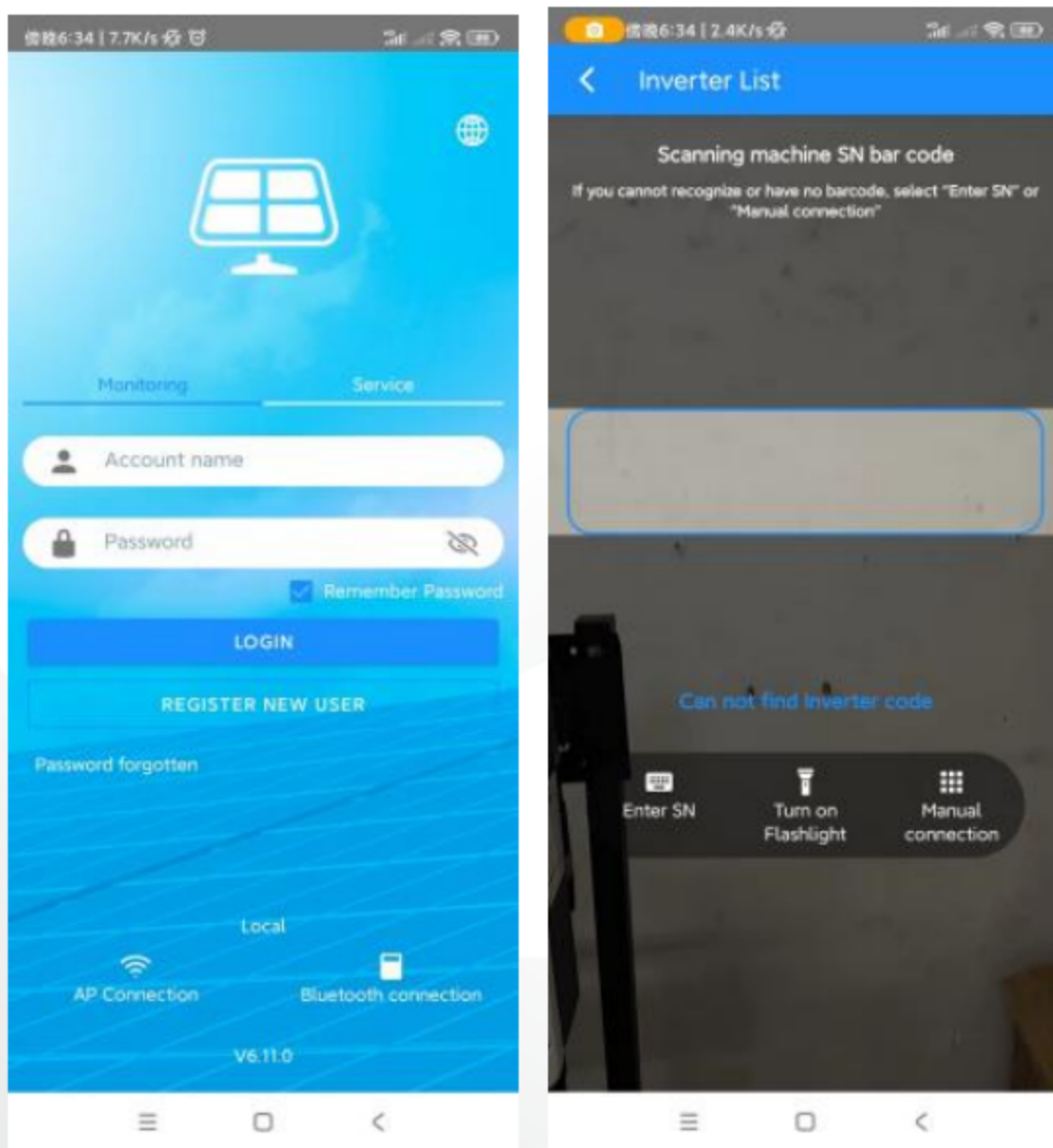
Version 1.0



January 2024

This manual is applicable to Single phase inverter.

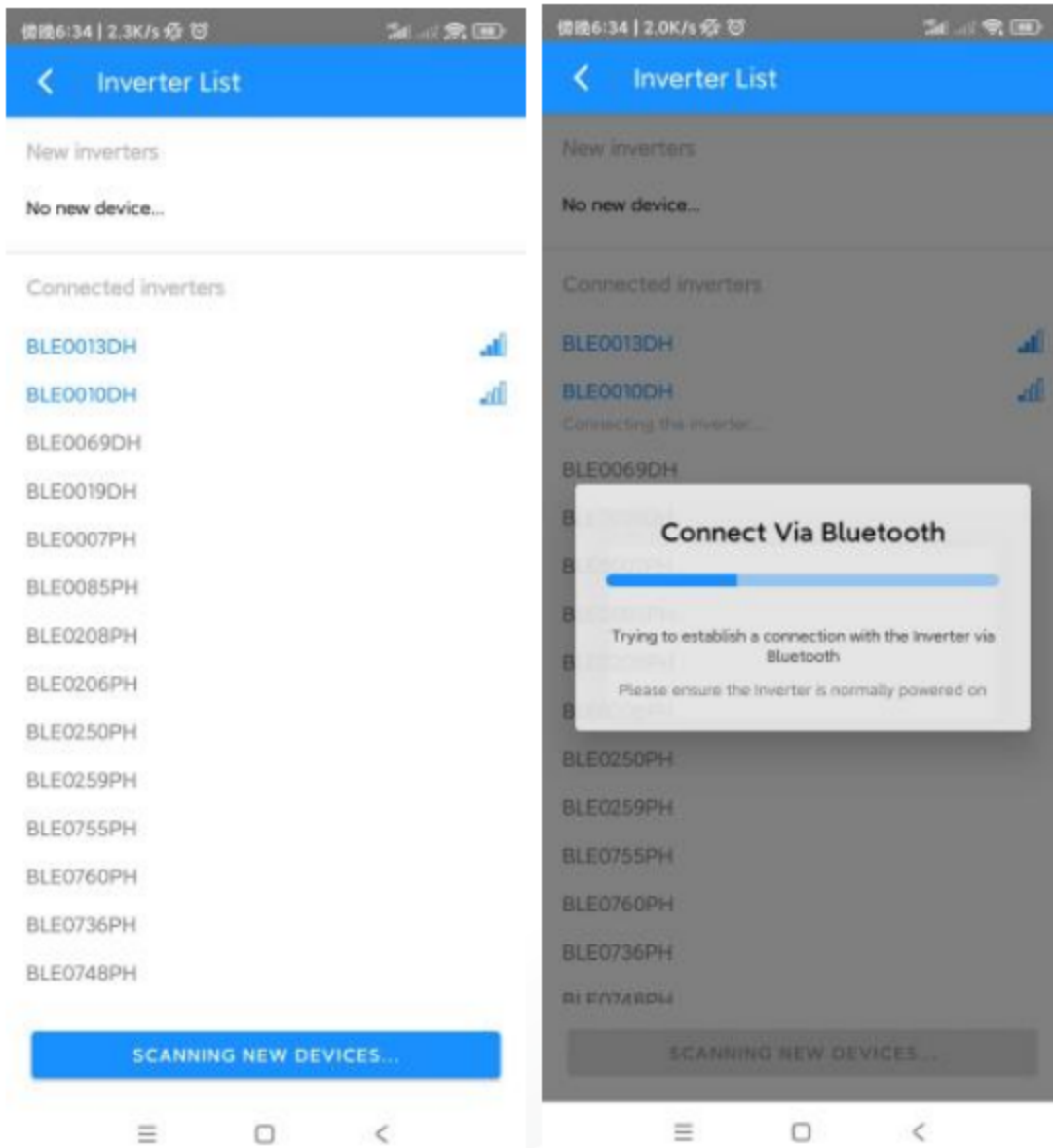
1. Open the solartouch app. Click on the "Bluetooth connection" in the lower right corner and then scan the bar code on the side of the inverter or click the "Manual connection" select the inverter that you want to connect. (If it is a new device, it will be displayed in the "New inverters" above, if it is an already connected device, it will be displayed in the "Connect Via Bluetooth" below, connect to the host inverter.)



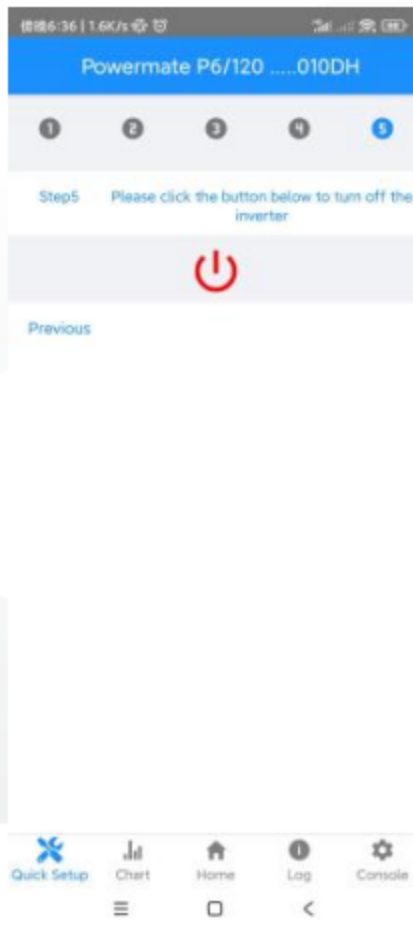
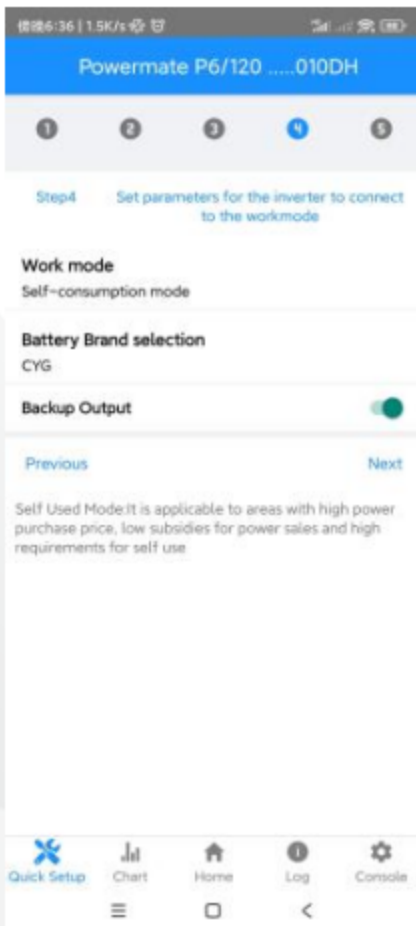
ADD: F4, B2, No.5, Keji 8th Road, High-tech Zone, Zhuhai, Guangdong, China

ADD: F2, No.13, Keji North 1st Road, Nanshan District High-tech Industrial Park, Shenzhen, China

WEB: www.cyg-et.com **Email:** ny-overseasales@cyg.com



2. Return to the APP "Quick Setup" menu, then set the Wifi account password, Grid type, Power control and Maximum feed in grid Power, Work mode, and Open. After setting parameters for the host, the host automatically sets updated parameters and starts up.

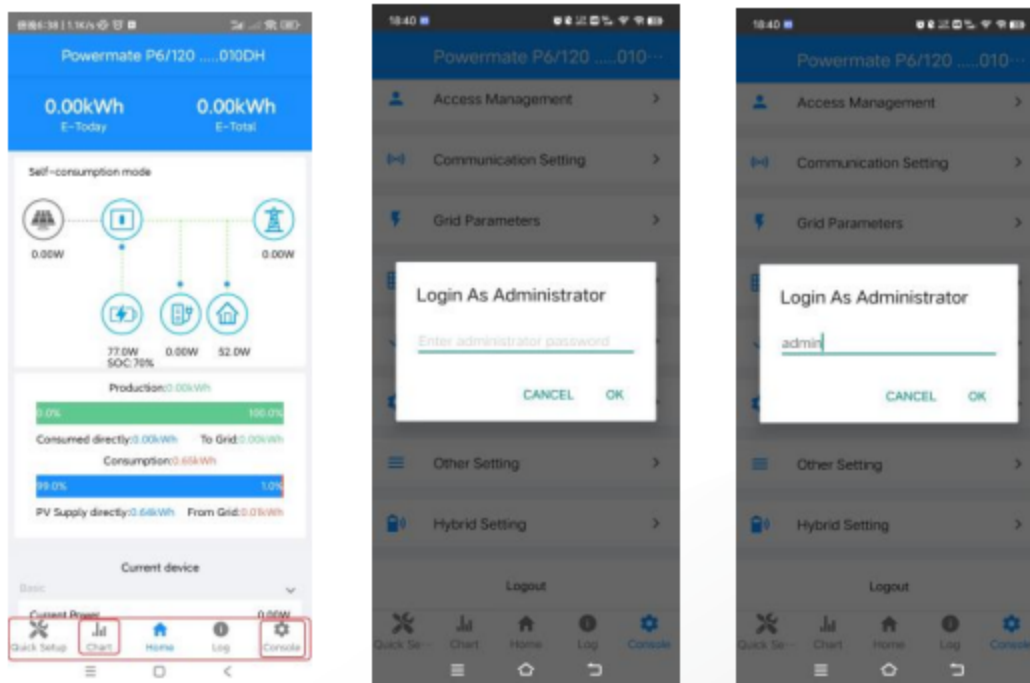


ADD: F4, B2, No.5, Keji 8th Road, High-tech Zone, Zhuhai, Guangdong, China

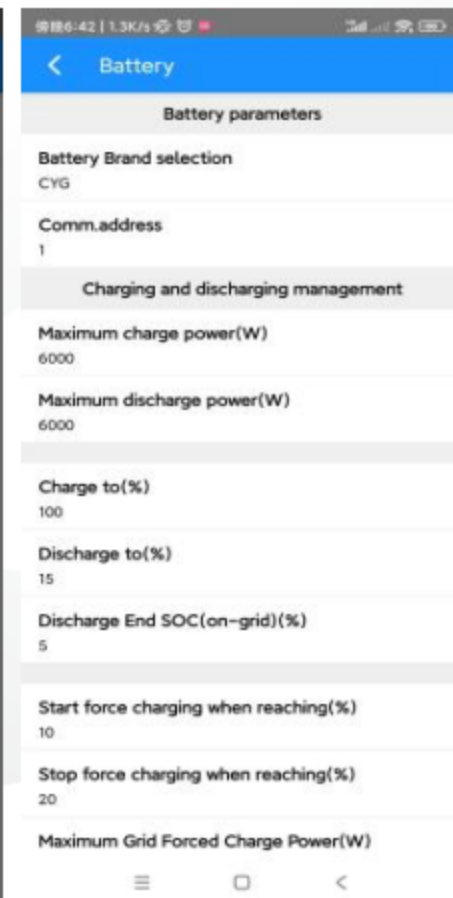
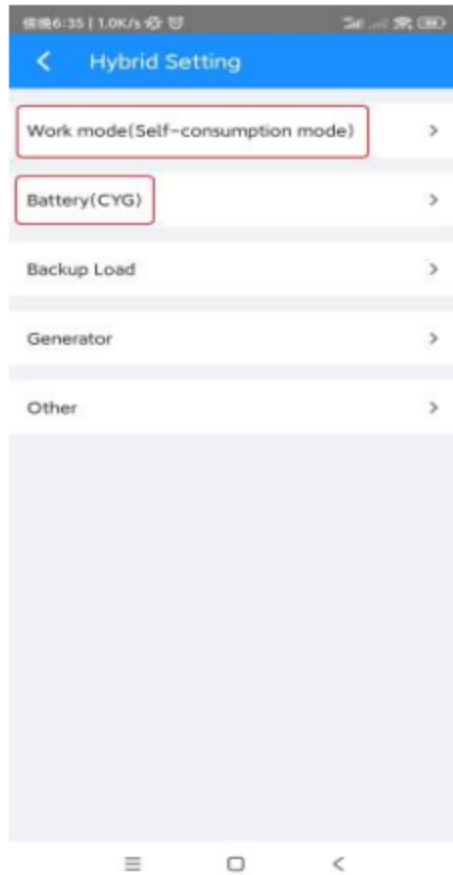
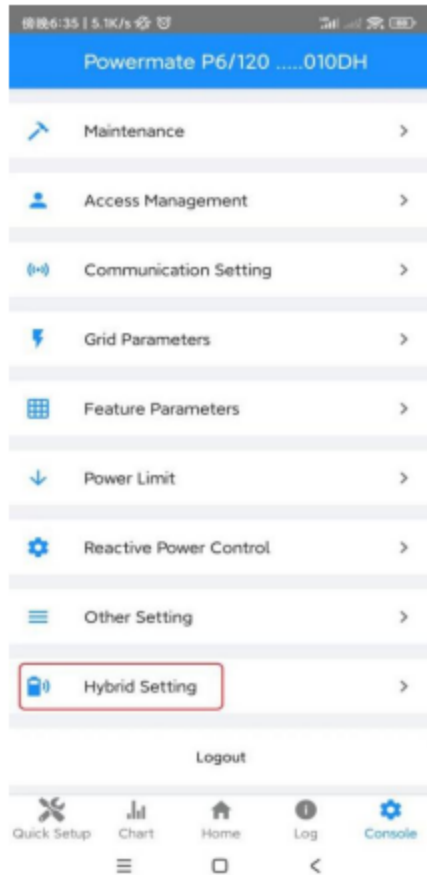
F2, No.13, Keji North 1st Road, Nanshan District High-tech Industrial Park, Shenzhen, China

WEB: www.cyg-et.com **Email:** ny-overseasales@cyg.com

3. After starting up, you can click the "Home" button at the bottom to view the inverter running status and monitor the relevant data. Click the "Console" button at the lower right corner to enter the inverter setting screen. Click the energy storage setting at the bottom and enter the password "admin" to enter.



4. In the Hybrid setting, Click the "Work mode" can change the working mode of the inverter . Click the "Battery(CYG)" to change the battery charging and discharging power, maximum discharge capacity, etc.



ADD: F4, B2, No.5, Keji 8th Road, High-tech Zone, Zhuhai, Guangdong, China

ADD: F2, No.13, Keji North 1st Road, Nanshan District High-tech Industrial Park, Shenzhen, China

WEB: www.cyg-et.com **Email:** ny-overseasales@cyg.com

The system supports several different operation modes.

5. “The time-based Control” of the inverter can be activated in the “Work mode” setting.

