

Three-phase inverter

Operation instructions

Version 1.0

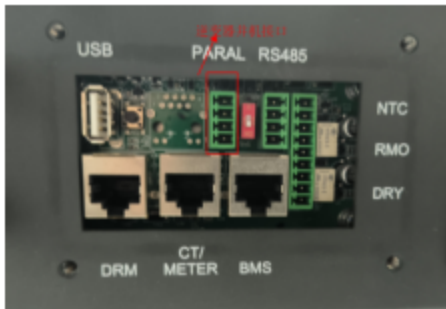


January 2024

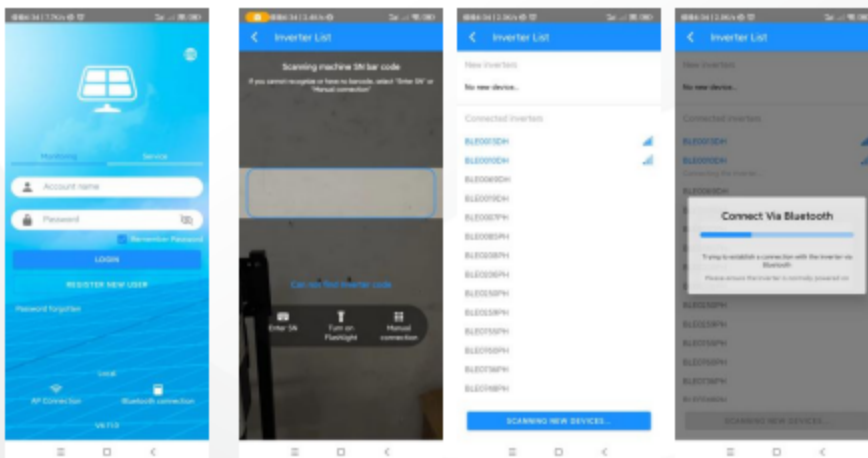
This manual is applicable to Three-phase inverter.

1.Blue tooth local setting

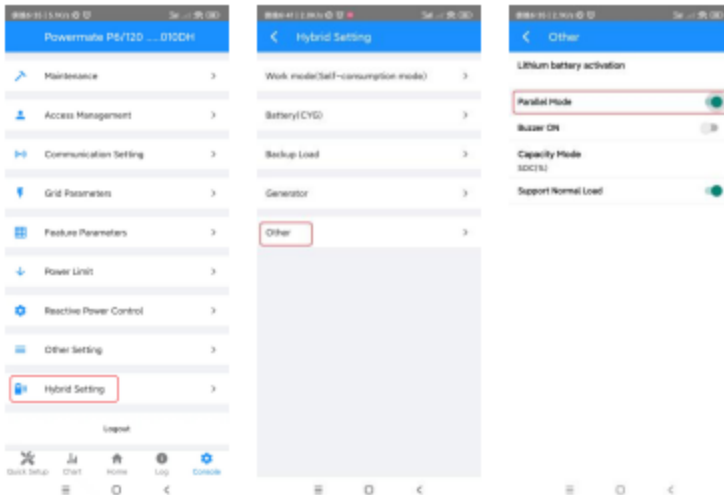
1. The host inverter is connected to the parallel line of the slave inverter, the dip switch is all "1", and the host inverter is connected to the CT and battery BMS communication line.



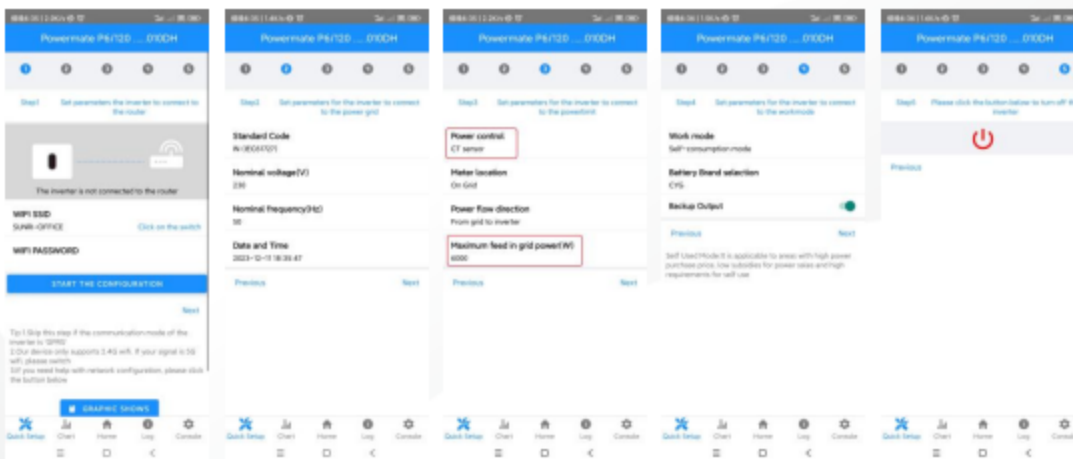
2. Open the solartouch app. Click on the "Bluetooth connection" in the lower right corner and then scan the bar code on the side of the inverter or click the "Manual connection" select the inverter that you want to connect (if it is a new device, it will be displayed in the "New inverters" above, if it is an already connected device, it will be displayed in the "Connect Via Bluetooth" below, connect to the host inverter.



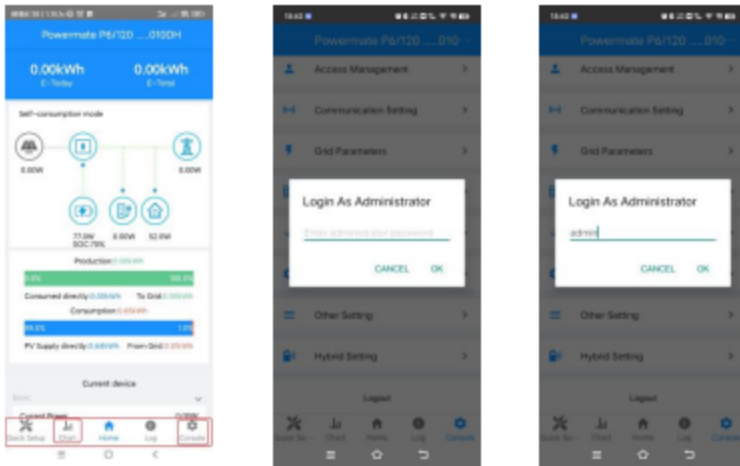
3. After entering the APP, select the "Console" menu, click the "Hybrid Setting" option, click "Other" under the "Generator" option, and check the "parallel Mode" to activate parallel mode.



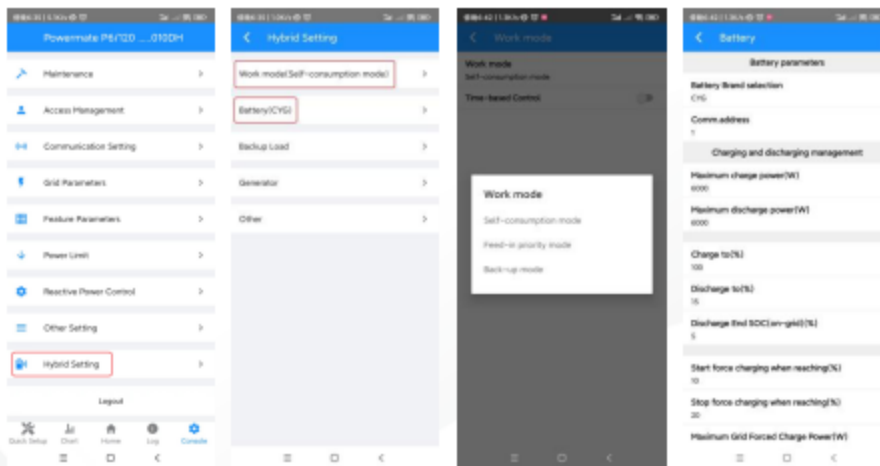
4. return to the APP "Quick Setup" menu, then set the Wifi account password, Grid type, Power control and Maximum feed in grid Power, Work mode, and Open. After setting parameters for the host, the host automatically sets updated parameters and starts up.



5. After starting up, you can click the "Home" button at the bottom to view the inverter running status and monitor the relevant data. Click the "Console" button at the lower right corner to enter the inverter setting screen. Click the energy storage setting at the bottom and enter the password "admin" to enter.



In the Hybrid setting, Click the “Work mode” can change the workingmode of the inverter .
 Click the “Battery(CYG)” to change the battery charging and discharging power, maximum discharge capacity, etc. The system supports several different operation modes.

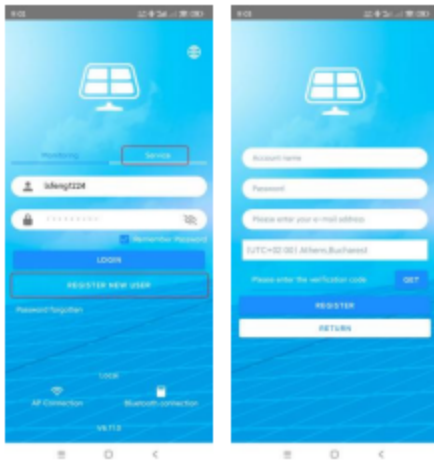


6. “The time-based Control” of the inverter can be activated in the “Work mode” setting.

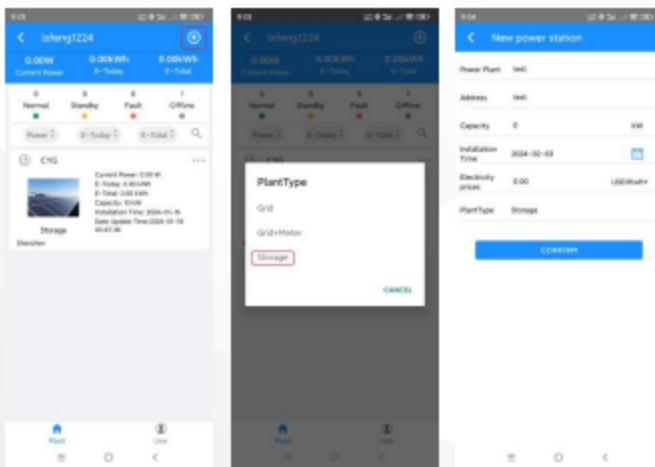


2.WIFI setting

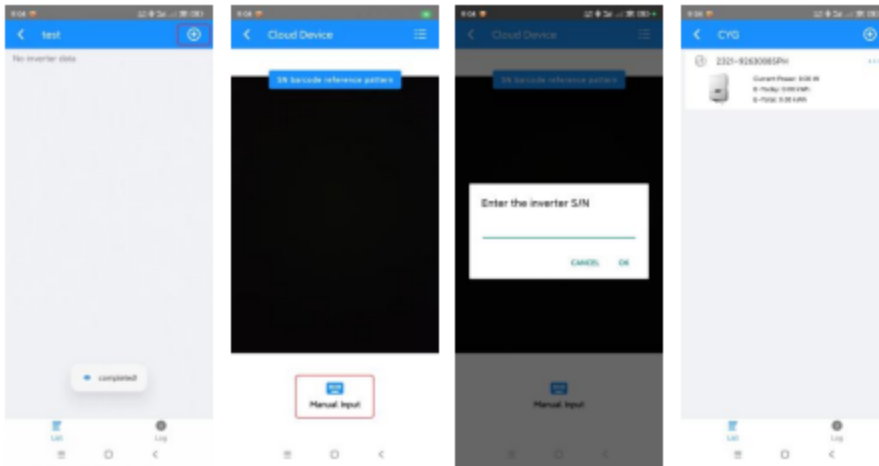
1. click the “Monitoring” and “REGISTER NEW USER” to create a Monitoring account,You need to fill in the information.



2. Click the “+ sign” in the upper right corner, select “Storage” in the PlantType, and fill in the configured power station information, so that you can create a Plant.



3. Click the “+ sign” in the upper right corner, Scan the barcode on the right side of the inverter or click the “Manual Input” , Enter the S/N code of the inverter so that you can add the inverter to the Plant(Notice: 1 inverter can only be added to 1 Plant).



4. Click the inverter in the Plant to enter the monitoring interface of that inverter.

